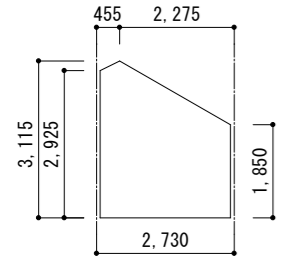


〈※ LDK 平均天井高〉

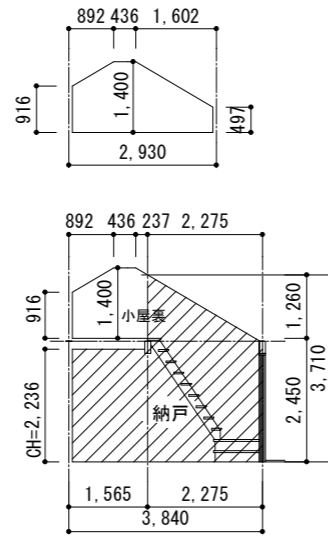
(小上り部分) $1.82 \times 2.73 \times 1.872 = 9.301$
 (口一力部分) $0.91 \times 2.275 \times 2.200 = 4.554$
 $4.75 \times 2.73 \times 2.399 = 31.109$
 $2.93 \times 3.64 \times 2.399 = 25.585$
 $9.301 + 4.554 + 31.109 + 25.585 = 70.549$
 $70.549 (\text{m}^3) / 30.67 (\text{m}^2) = 2.300$
 $= 2.300 \text{ mm}$

〈※ BR1 平均天井高〉



$(2.925 + 3.115) \times 0.455 / 2 = 1.374$
 $(1.850 + 3.115) \times 2.275 / 2 = 5.647$
 $(1.374 + 5.647) \times 3.185 = 22.361$
 $22.361 (\text{m}^3) / 8.69 (\text{m}^2) = 2.573$
 $= 2.573 \text{ mm}$

〈※ 小屋裏収納 平均天井高〉

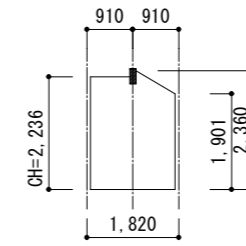


$(0.916 + 1.400) \times 0.892 / 2 = 1.032$
 $(0.497 + 1.400) \times 1.602 / 2 = 1.519$
 $1.400 \times 0.436 = 0.610$
 $1.032 + 1.519 + 0.610 = 3.161$
 $3.161 \times 4.24 = 13.402$
 $(0.916 + 1.400) \times 0.892 / 2 = 1.032$
 $(1.26 + 1.400) \times 0.237 / 2 = 0.315$
 $1.400 \times 0.436 = 0.610$
 $1.032 + 0.315 + 0.610 = 1.957$
 $1.957 \times 2.13 = 4.168$
 $(13.402 + 4.168) (\text{m}^3) / 15.76 (\text{m}^2) = 1.114$
 $= 1.114 \text{ mm}$

〈※ 納戸 平均天井高〉

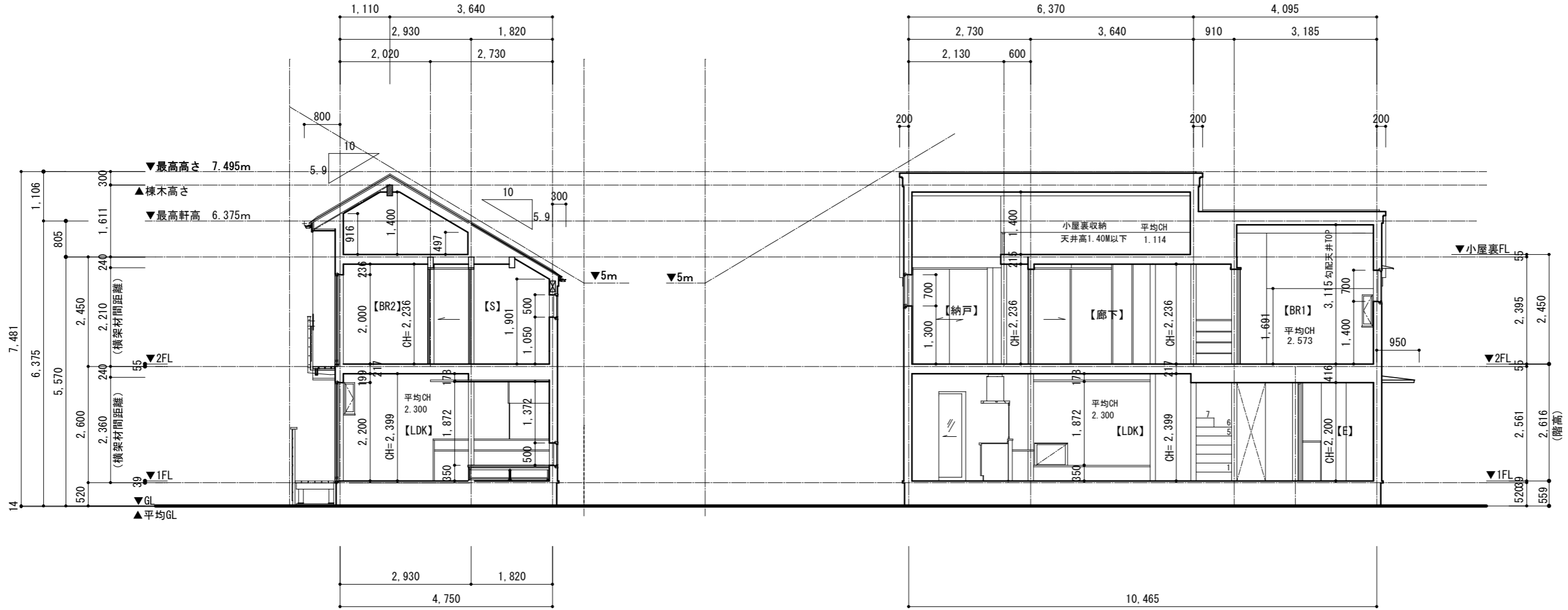
$(2.45 + 3.710) \times 2.275 / 2 = 7.007$
 $7.007 \times 2.130 = 14.924$
 $1.365 \times 0.6 \times 2.236 = 1.831$
 $1.565 \times 2.73 \times 2.236 = 9.553$
 $14.924 + 1.831 + 9.553 = 26.308$
 $26.308 (\text{m}^3) / 9.94 (\text{m}^2) = 2.646$
 $= 2.646 \text{ mm}$

〈※ 2F 階段 平均天井高〉



$(1.901 + 2.360) \times 0.91 / 2 = 1.938$
 $2.236 \times 0.91 = 2.034$
 $(1.938 + 2.034) \times 1.82 = 7.229$
 $7.229 (\text{m}^3) / 3.31 (\text{m}^2) = 2.183$
 $= 2.184 \text{ mm}$

ハルコー
 FRP防水 DR-1550
 サツ下部立上がり: 120以上
 その他部分: 250以上
 勾配: 1/50



南-北 断面図

西-東 断面図

OKANIWA
 STYLE

確-05

Category

新築工事

Title

断面図

Date

2019.01.30

Drawn

tanaka

Scale

1/100

Check

Change Days

Use

OKANIWA DESIGN

二級建築士 神奈川県知事登録第32456号
 田中 信歩